

CONSULTATION DOCUMENT – ENGLISH SHORT VERSION

**Consultation under Chapter 6 of the Environmental
Code for Slätthögs-Målen Wind Farm**

Alvesta municipality, Kronoberg County



2024-11-13

1 Introduction

| | |
|----------------------------|---|
| Applicant | Fornybar by Eolus Hydro Rein AB, reg.no 559251-4003 |
| Contact persons | Jakob Economou, +46 (0) 70-243 07 84, jakob.economou@eolus.com Sara Schröder, +46 (0) 73-815 33 60, sara.schroder@eolus.com |
| Further information | Further information on the project is available in Swedish on the website https://fornybar.se/slatthogsmalen |

This document is part of a consultation under Chapter 6 of the Swedish Environmental Code. It is a short version of a consultation document in Swedish¹ and it has been prepared as it has come to the applicant's knowledge that some residents in the vicinity of the project area do not speak Swedish.

This document will be distributed to anyone who requests it. Oral information about the project in English, can be obtained from the contact persons stated above.

2 The Slätthögs-Målen Wind Farm

Fornybar by Eolus Hydro Rein AB intends to apply for a permit under the Swedish Environmental Code for a wind farm in Alvesta municipality in Kronoberg County. The project is called Slätthögs-Målen wind farm (Sw. Slätthögs-Målen vindkraftspark) and it is intended to include up to 9 wind turbines. A wind farm of this size can produce green electricity of up to around 125,5 GWh per year, which is equivalent to the annual domestic electricity needs of almost 25 100 households. The project area is indicated in Figure 1 below. The indicated wind turbine positions are just examples.

¹ Available on <https://fornybar.se/slatthogsmalen>

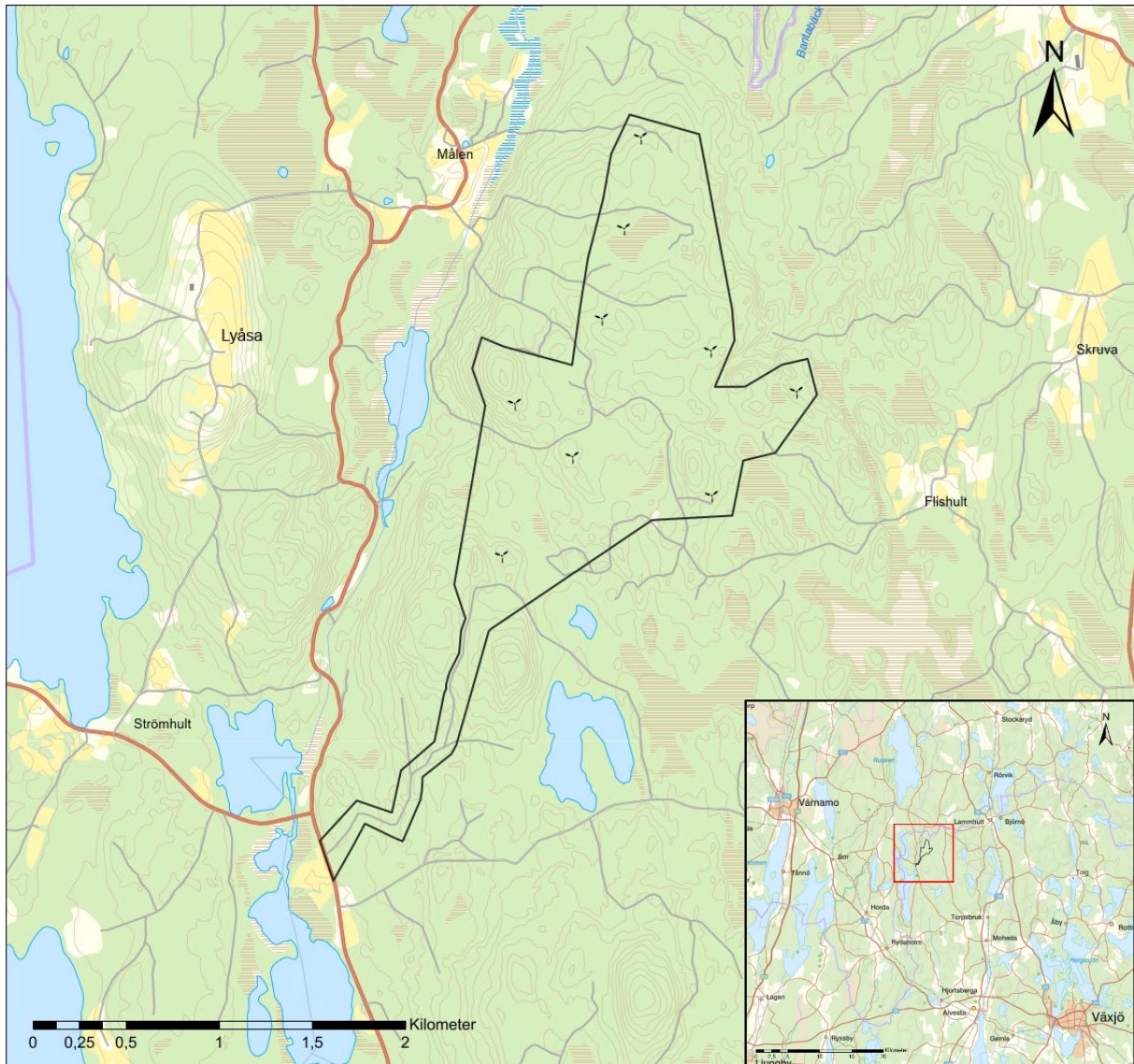


Figure 1. Project area and example layout.

3 The consultation process

The construction and operation of a wind farm requires a permit under the Swedish Environmental Code. The permit application must be preceded by a consultation process.

The purpose of the consultation process is to obtain opinions and information from, amongst others, local residents, those that are likely to be particularly affected, organisations, associations, municipalities and authorities. These comments will be considered in the environmental impact assessment (“EIA”), which will be part of the permit application. Comments received during the consultation process will also be attached to the application documents.

If you have any comments, you can submit them via a form on the website

<https://fornybar.se/slatthogsmalen>, or by e-mail to slatthogsmalen@eolus.com (please state *Consultation*

Slätthögs-Målen in the email's Subject field). You can also send a letter to:

Fornybar by Eolus Hydro Rein AB

Co Eolus Vind AB

Ref. Consultation Slätthögs-Målen

Torsgatan 5B

411 04 Göteborg

We wish to receive your comments on **14 February 2025**, at the latest.

4 Short description of the planned activities

The Slätthögs-Målen wind farm is intended to include up to 9 wind turbines, each with a maximum total height of 180 meters. During the work with the EIA, it will be decided, based on for example wind conditions and conflicting interests, in which parts of the project area the wind turbines will be erected. Precise positions and turbine models will be decided after the permitting process.

The wind farm includes certain ancillary activities, such as power lines, roads to and within the project area, service buildings, crane sites, substations, logistics areas and parking areas. This may involve, e.g., the construction of hard surfaces and may affect areas outside the project area.

Wind turbines today have a technical lifetime of about 35 years. When a wind farm is decommissioned, the turbines are taken down and land is restored in consultation with landowners and the authorities. This will be described in the EIA.

5 Location

The project area is located in a hilly landscape with several nearby lakes. The project area consists mainly of production forest and small forestry roads. There are 17 residential buildings and holiday homes within 1 km of the project area. The closest villages are *Målen*, *Lyåsa* and *Flishult*, both within a distance of about 2 km from the project area. The nearest wind farm is *Lyngsåsa*, about 24 km south of the project area.

The choice of location depends on, among other things, wind conditions, the possibility to transmit electricity to the grid, and municipal planning.

- According to the wind mapping MIUU² (Swedish Energy Agency), the annual average wind speed in the project area is 7.5–8.0 m/s, at an altitude of 140 meters above land, which makes the area suitable for wind power production.
- Some existing roads are available within and outside the project area. This reduces the need to construct new roads.
- The project area partly overlaps with an area that has been identified as suitable for wind power in the municipal land use plan (Sw. *översiktsplan*).

The EIA will include a description of alternative locations and the reasons why Slätthögs-Målen is the chosen location.

6 Environmental impact

6.1 Introduction

The environmental impact of the wind farm will be finally assessed and presented in the EIA. The following is an outline and preliminary description of the impact.

6.2 Areas of national interests and protected areas

Some areas constitute national interests under Chapters 3 and 4 of the Environmental Code. The project area is within a national interest for aviation due to Hagshult's airport. There is also a small part where the access road is planned for the national interest for nature conservation (Sw. Riksintresse naturvård).

Within 10 km of the project area there are several areas of national interests for nature conservation, cultural protection (Sw. kulturmiljövård), water protection (Sw. skyddade vattendrag), railway (Sw. järnväg) as well as Natura 2000 sites. Of the national interests that are located closest to the project area, two are linked to the

² Vindbrukskollen. 2023. STEM Vinddata MIUU. Höjd 140 m, årsmedelvind.

Lyåsa village environment and its nature to the west of the project area.

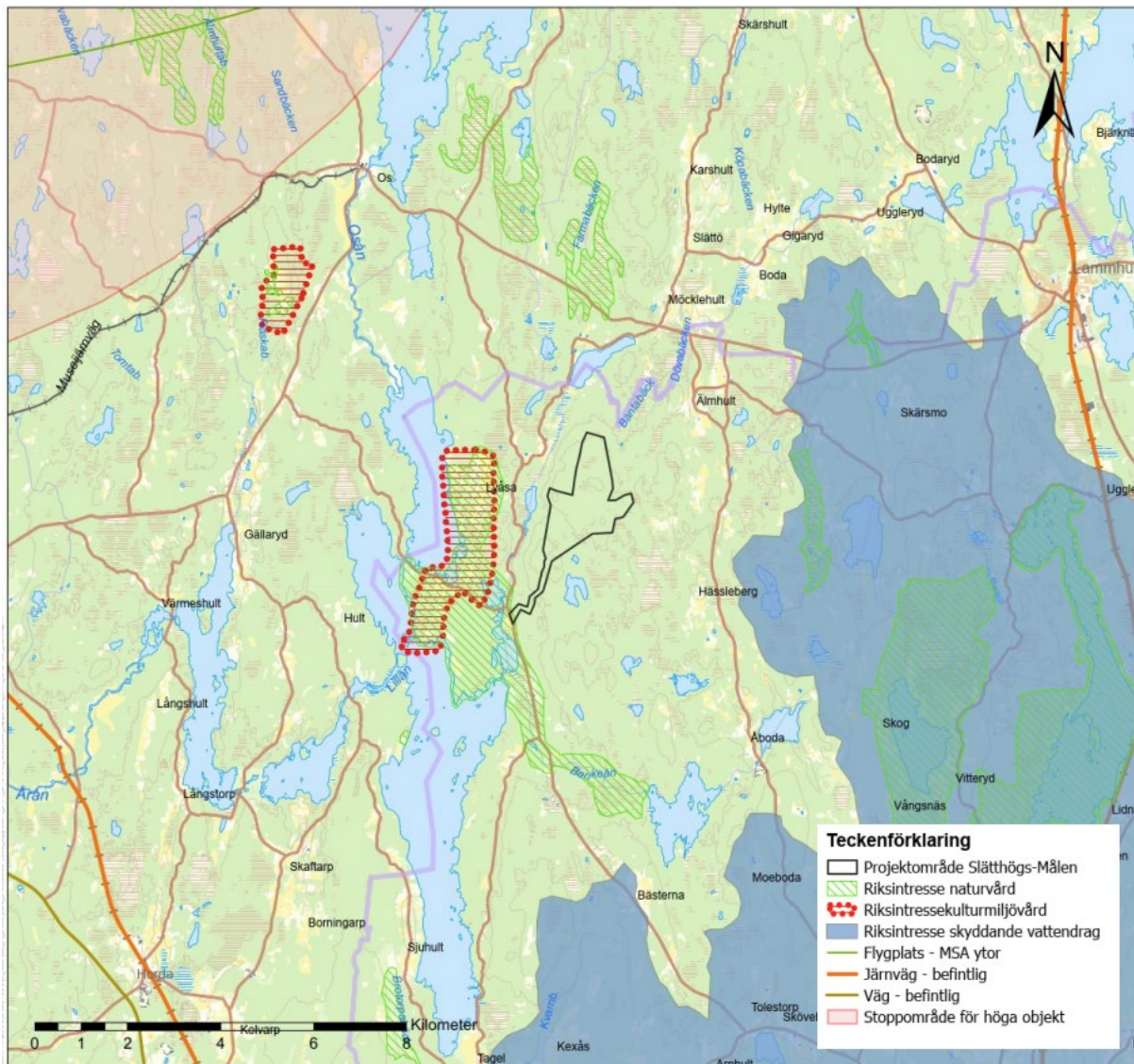


Figure 2. National interest areas within 10 km from the project area.

There are no designated protected areas that are covered by protection under Chapter 7 of the Environmental Code within the project area. Within 10 kilometres of the project area, there are several protection areas, nature reserves, Natura 2000 areas, as well as a water protection areas.

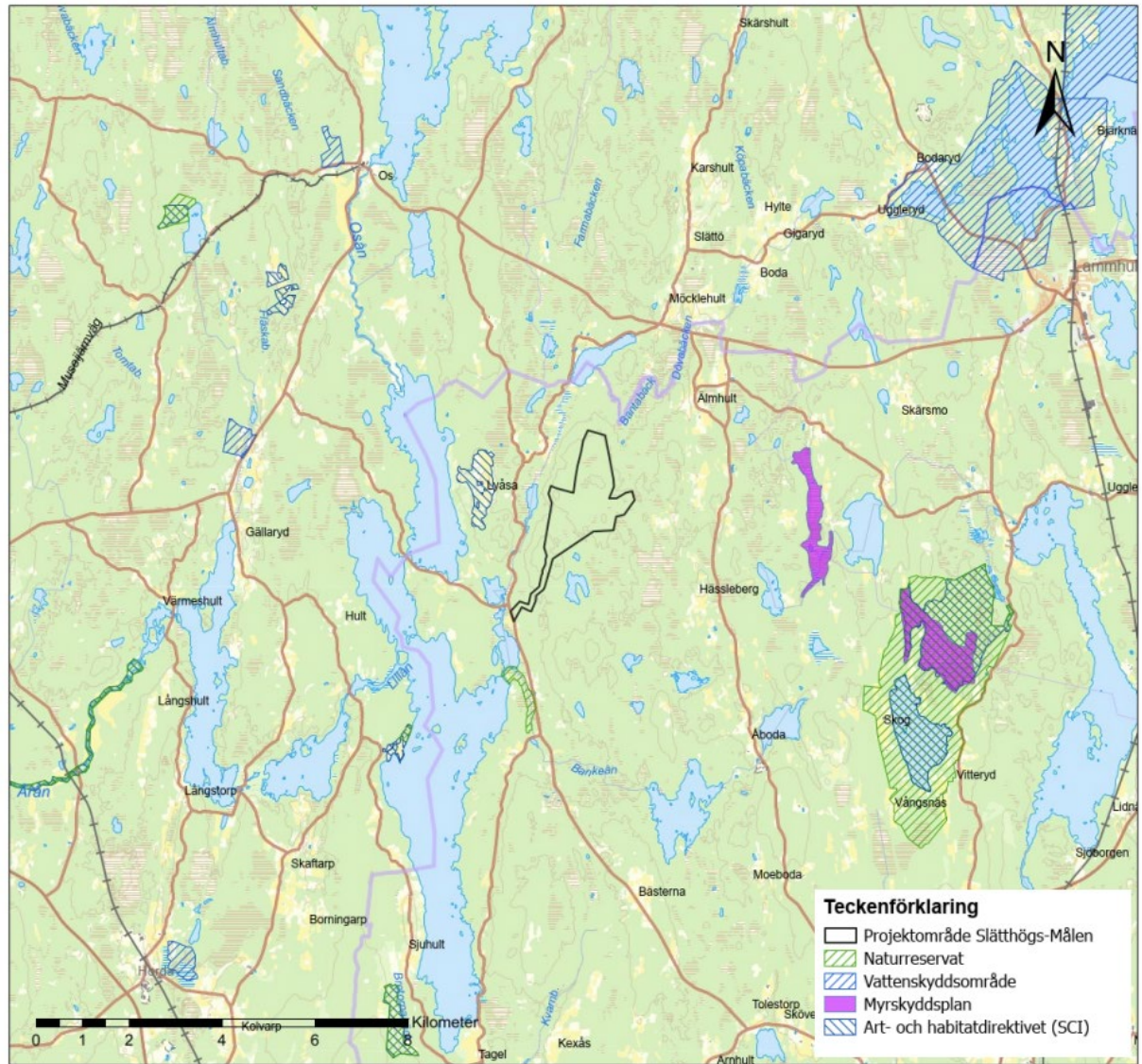


Figure 3. Protected areas in the vicinity of Slätthögs-Målen wind farm.

6.3 Human health and living environment

6.3.1 General

Wind turbines' impact on human health and the living environment is mainly noise, light and shadows, and the visual impact on the landscape. For Slätthögs-Målen wind farm, the following can be noted regarding these matters.

6.3.2 Noise

Noise from wind farms occurs during construction, operation and decommissioning. The wind farm will comply with the Swedish Environmental Protection Agency's general guidelines.³ According to these, an equivalent sound level of 40 dB(A) should not be exceeded at nearby homes during the operational phase. During the construction and decommissioning phase, higher noise levels are allowed. Regardless of the wind farm's final layout in the project area, noise levels will not exceed the guideline values.

Low-frequency noise is sound in the frequency range 20-200 Hz. The Swedish Public Health Agency has published non-binding guidelines for low-frequency noise levels indoors.⁴

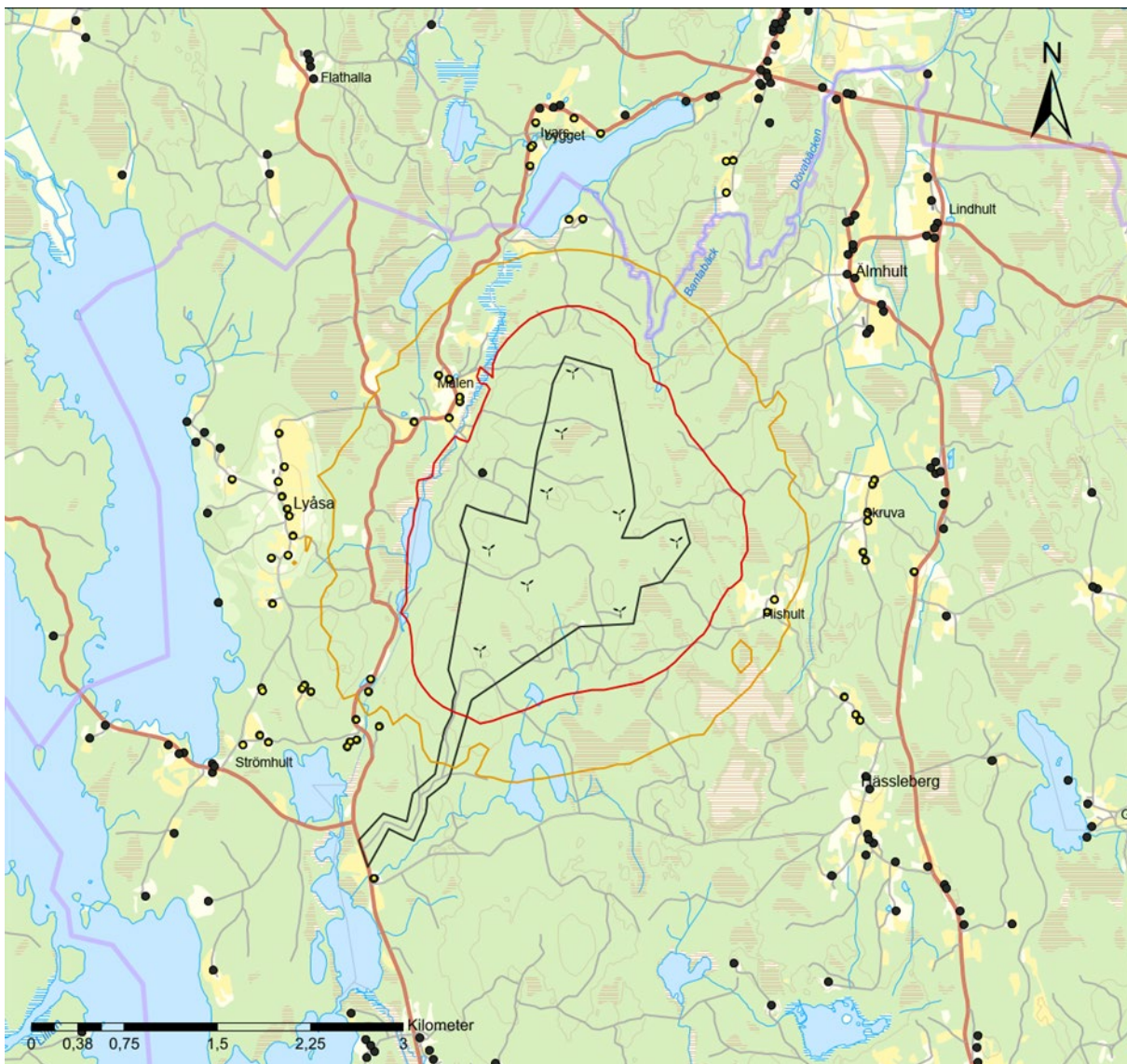


Figure 3. Sound propagation based on example layout with turbines with a total height of 180 meter. Orange line illustrates 35 dB(A) limit and red line illustrates 40 dB(A) limit.

³ Swedish Environmental Protection Agency 2004, *Naturvårdsverkets allmänna råd om buller från byggplatser*, NFS 2004:15, and Swedish Environmental Protection Agency 2020, *Vägledning om buller från vindkraftverk*.

⁴ The Public Health Agency of Sweden 2014, *Folkhälsomyndighetens allmänna råd om buller inomhus*, FoHMFS 2014:13

6.3.3 Light, moving shadows and other visual impact

The wind turbines will be equipped with lights in accordance with applicable regulations on aviation safety.⁵

To the extent that moving shadows at residential and holiday homes exceed the applicable guideline values of 8 hours/year or 30 minutes/day, shadow control equipment will be installed on the turbines causing this.⁶

The wind farm is deemed to have high visibility from surrounding lakes and terrain. The project area is located 210–260 m above sea level. The area is surrounded by lakes and the land in the area consists mainly of forest and meadows. Visual impact on the landscape will be assessed in the EIA.

6.4 Natural values

There are natural values within and around the project area. A natural value inventory will be carried out in the project area and reported in the EIA.

The project area consists of hilly forest terrain with some occurrence of smaller bogs and mosses. In the project area there is one smaller watercourse. Measures will be taken to prevent impact on water flow and to prevent the risk of contamination of water.

6.5 Birds and bats

Birds and bats are the animal groups most sensitive to wind farms. Birds can be affected through collision, habitat loss or barrier effects. All types of birds suffer a risk to collide with wind turbines. The risk is generally bigger for inhabitant birds than for those that only pass by in active flight.⁷

Also bats can collide with the rotor blades. Species that fly above tree-top height are called high-risk species. The most important measure to protect bats is to adjust the operation of the wind turbines, e.g. keeping them stationary, during the times and weather conditions when bats are most active.⁸

We've had bird inventories in the area since 2021 and plan to do further studies on birds and bats during 2025. The EIA will include an assessment of impact on birds and bats.

6.6 Cultural heritage values

There are two areas of national interest for cultural heritage conservation (Sw. Riksintresse för kulturmiljövård) within 10 km of the project area; one, *Lyåsa-Strömhult*, 1,1 km west of the project area and *Lädja-Rösås* 6,6 km northwest from the project area.

There are also some ancient and cultural-historical remains in the project area. A cultural environment inventory will be carried out in the project area during 2025 and the results will be presented in the EIA.

6.7 Risk and safety

During certain weather conditions, there is a risk of ice build-up on the wind turbine blades, which can cause so called ice throws. The risk of this happening is limited but warning signs will be erected at suitable distances from the turbines.

⁵ Swedish Transport Agency 2020, *Transportstyrelsens föreskrifter och allmänna råd om markering av föremål som kan utgöra fara för luftfarten*, TSFS 2020:88.

⁶ The National Board of Housing, Building and Planning 2012, *Vindkraftshandboken: Planering och prövning av vindkraftverk på land och i kustnära vattenområden*.

⁷ Vindval 2017, *The effects of wind power on birds and bats – an updated synthesis report 2017*.

⁸ Vindval 2017, *The effects of wind power on birds and bats – an updated synthesis report 2017*.

Fires in wind turbines are uncommon, but to further reduce the risks, the turbines will be regularly serviced and equipped with lightning conductors and fire extinguishers.

The turbines will be equipped with automatic systems that switch off the turbines in case of too high wind speeds or imbalance.

7 Local benefits

A wind farm can bring a positive contribution to the district and the region as it contributes to local benefits in the form of direct and indirect jobs and strengthened local services through increased consumption of local goods and services. The construction phase entails the greatest need for labour.

Once the turbines have been erected, personnel are also needed for the operation of the wind farm and maintenance and other services in the local community, such as accommodation.

Part of the income from wind farm will go to the local community. The company will have its own system where compensation accrues to nearby residents, unless a new national regulatory framework regarding compensation for nearby residents has adopted and which is based on the park's income from electricity production and the distance between the home and the wind turbines.

There will also be a so called "wind money" (Sw. vindpeng), also known as "community money" (Sw. bygdepeng), which is a form of financial support awarded to the local communities where the turbines stand and are distributed annually throughout the wind farm's operating life.

For Slätthögs-Målen Wind Farm, the "wind money" is set at a percentage of the farm's gross revenue. Usually the annual sum is set aside in a fund from which local associations and organisations can apply for support for different types of measures. It is usually linked to measures that promote natural values, outdoor life or sport activities.

We expect there will soon be new national regulation on how to financially support nearby residents, local associations and organisations and the municipality during the wind farm's operational lifetime.

8 The process ahead

Investigations for the EIA will be completed in 2025. We plan the following investigations:

- Natural values inventory
- Further bird inventory
- Bat inventory
- Cultural heritage inventory
- Sound and shadow calculations

When the EIA is completed, we will file a permit application. We intend to do this during the beginning of 2026.

Förnybar

by Eolus & Hydro Rein

<https://fornybar.se/slatthogsmalen>